

# EASY GUIRO

user manual



loops de la Crème - March 2019

Thank you for purchasing **EASY GUIRO!**

This Kontakt library offers one deeply sampled guiro instrument with automatic rhythmic functions and easy to play articulations. A second instrument offers ten additional guiros with cool and varied sounds.

The library also includes extra sound presets and midi files.

## INSTALLATION

To install the samples and instruments on your hard drive, unzip the file named EASY GUIRO.zip. On a Mac, use the default 'Archive utility'. On a PC, I recommend to use Winrar or Winzip to properly unzip the file.

You can then copy/paste the EASY GUIRO folder to your sample library hard drive, and make sure you make a backup of the new samples on a separate drive (or a SD card / USB stick...)

### IMPORTANT NOTE:

!!! Please keep the EASY GUIRO folder structure intact: Do not move or erase a folder or a file from the main EASY GUIRO folder to ensure proper loading of the instruments.

## LOADING INSTRUMENTS

To load patches, find the folder from the Kontakt files menu and select the patch you wish to load: just double-click on a patch or use drag- and-drop. You can also use Kontakt's '**quick load**' menu. Find more infos about this in Kontakt's user manual.

***NB: Native Instruments Kontakt 5.3.1+ is required to fully use the instruments. Make sure you have the latest updates installed.***

You can also load patches with Kontakt Free Player in demo mode (with a 15mn time limit and saving functions disabled).

Along this user guide, you'll find a pdf **License Agreement**. Please read this text carefully, it precisely explains the things you are allowed and not allowed to do with the sample library.

## KONTAKT INSTRUMENTS

EASY GUIRO features 2 kinds of instruments, with several additional sound presets for both instruments:

1. EASY GUIRO
2. ALL GUIROS SET

### 1. EASY GUIRO

#### 01\_EASY GUIRO (and presets 02 to 07)

This patch is the main instrument.

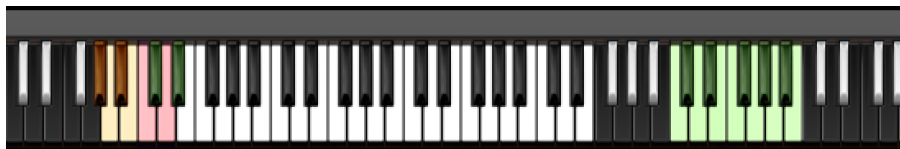
It uses deep sampling, extended round-robin (a new sample is played each time you press the same key) and dynamic response (the sound will be louder, more cutting and slightly brighter when you play a key with more force).





*For maximum realism, try to actually play, perform and record this instrument live in your tracks!*

#### ABOUT THE KEY COLOURS:



1. YELLOW (G#0, A0, Bb0 and B0): **automatic 'sweeps'** - reproduces the sound of a musician scraping the guiro up and down in a steady and consistent way.
2. RED (C1 and D1): **accented strokes** - reproduces the sound of a musician tapping/hitting the guiro with the tip of the stick (C1) or the side of the stick (D1)
3. CYAN (C#1 and D#1): **quick accented 'sweeps'** - reproduces the effect when the musician performs a very fast upwards (C#1) or downwards (D#1) 'sweep'.
4. WHITE KEYS (E1 to E4): **single guiro ridges** - each white key represents one of the ridges of the guiro, from top to bottom. Play glissandos on these keys to reproduce the typical scraping sound of the guiro!
5. GREEN (C5 to B5): **tempo-synced rhythms**

*For maximum realism, the instrument is monophonic: triggering a new key will automatically stop the previous sample in a natural way.*

## HOW TO PLAY THE INSTRUMENT:

There are basically four ways to get natural results with this instrument:

### 1. Automatic 'sweeps'

Shortly press one of the yellow keys, and combine the resulting 'sweeps' with the accented strokes and quick 'sweeps' (red and cyan keys)

### 2. Live 'sweeps'

Perform a glissando on the white keys to reproduce the sound of a musician scraping the guiro. Combine this technique with the accented strokes and quick 'sweeps' (red and cyan keys)



You can use upwards and downwards glissandos. Different keybeds (small keys, 'waterfall' keyboards...) can be easier to use.

Try to use just the **tip of a finger** for a stronger sound, or the full palm of your hand for softer results.

You can also try **flat keyboards** or an iPad connected to your DAW for even easier 'sweeps'

For maximum control, **slow-down the tempo** of your track to record the glissando performance.

### 3. Built-in rhythms

Use the green keys to instantly get realistic grooves (*see more info below*)

### 4. Midi grooves

Import some of the MIDI files in your DAW. You will find the files in the folder *EASY GUIRO/MIDI LOOPS*.

The midi files are loops of one to four bars. They will work well with all presets included in the library.



Each MIDI file has a tempo indication in BPM. This means the groove will work best at the indicated tempo, but feel free to try the grooves at various speeds :)

## USING THE RHYTHMS:

All 'EASY GUIRO' presets (01 to 07) feature built-in rhythms. The rhythms can be controlled by using the green keys (C5 to B5):



How to use the tempo-synced rhythms:

- Press any of these green keys to start a rhythm.
- Once a groove is playing, press a different key to switch to another rhythm.
- Press the last depressed key a second time to stop the groove.



The keys C5, D5, E5, F5, G5, A5 and B5 offer different **main grooves**. The corresponding black keys (C#5, D#5...) feature a **variation** of the main grooves. For example, G#5 is a variation of the G5 rhythm.

### !!! Changing the way the grooves are triggered and stopped:

The way the grooves are triggered per default is great fun for jamming. You might however prefer to have **the grooves only play when a key is pressed**, and stop when the key is released. It is very easy to change this within Kontakt. Here is a step-by-step guide:

- First, you must 'open' Kontakt by clicking on the tool at the top left.
- Then click on Script Editor (at the right, just under the main Volume fader)
- You'll see the different Tabs for the scripts. Click on the 'Drum Computer' tab, last on the right.
- In the Global Options, click on the button Latch to deactivate it:



That's it, now the rhythms only play for as long as you hold the key.

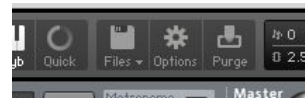
You can click on the tool again (to close the menus/scripts).

Now you might want to resave the patch. You can overwrite the current patch or use a different name. Just make sure you choose the option 'patch only', and save the patch in the Instrument folder.

### !!! Recording the rhythms and rolls as **MIDI** in your DAW:

It is possible to record Midi data into your DAW from the built-in grooves.

To do this, click on the icon 'Options' at the top:

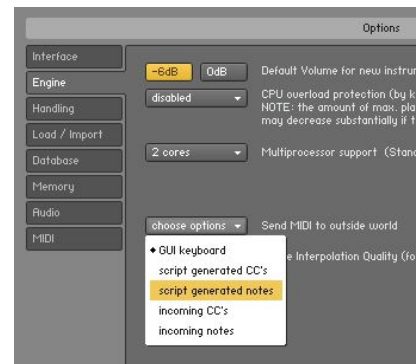


In the options box, choose 'Engine' and click on 'choose options' for the 'Send MIDI to outside world' category.

Choose the option 'script generated notes'

That's it, Kontakt will now send MIDI notes when rhythms are played.

Make sure you **properly configure a MIDI track in your DAW** to receive and record these MIDI notes. Since all DAWs have a specific way of configuring tracks, you can check your DAW's user manual or do a search on internet if you haven't done this before.



## 2. ALL GUIROS SET

### 10\_ALL GUIROS (and presets 11 to 18)

These presets let you quickly access and play 10 different guiros.

Click on the guiro names to load the corresponding guiro:



All models offer a similar **key mapping**:



RED KEYS (C1, C1, D1 and D1): four different **accented strokes**

WHITE KEYS (E1 to E4): **single guiro ridges** - each white key represents one of the ridges of the guiro, from top to bottom.

## USING THE INTERFACE TO CUSTOMISE THE SOUND:



- **ATTACK:** Bring this control up to reduce the attack (transients) and create smoother, softer 'sweeps'.

- STEREO (*EASY GUIRO presets only*): use this to reduce or increase the stereo width
- REVERB SELECTOR: pick one of 6 custom Impulse Responses
- BASS, MID, TREBLE: an equalizer with gentle curves and a smooth, natural sound
- EQ: activates or bypasses the EQ section
- DRIVE: a parallel overdrive, with little amount of warm distortion mixed with the dry signal.
- TAPE: Emulation of tape saturation and colour.
- COMP: a parallel compressor to control dynamics.



*you can assign any knob from the Kontakt user interface to any of your hardware controller. To do this, right-click on the knob you would like to assign. Choose the option 'learn MIDI CC# Automation'. Then just move a knob on your controller (or the mod wheel). That's it!*

*To unassign the knob, right click on it again, and choose 'remove MIDI automation'*

## TWEAKING THE EFFECTS INSIDE KONTAKT:

You can easily change the effect parameters or replace effects for each single nki. To do this, first click on the tool at the top left corner of the Kontakt instrument:



Then scroll down to the section 'INSERT EFFECTS':



You can see a chain of 8 effect slots.

The first one (here SGEQ) is controlled by the 'EQ' knob on the interface.

The second one is the stereo width effect (*EASY GUIRO* only)

The fourth effect (Skrm) corresponds to the 'Drive' knob.





The fifth one (Tape) is controlled by the 'Tape' knob on the interface.

The sixth one (S-Comp) corresponds to the 'Comp' knob on the interface.

For each effect, you can press the red letter 'B' to bypass or activate the effect.

Click on the cross (x) to delete the effect, and replace it with a different one by clicking on the +

Click on the center of an effect slot to select it and have access to all effect parameters.

When you're satisfied with the changes, scroll back to the top, and press the tool again to close Kontakt's edit mode.

## !!! SAVING YOUR INSTRUMENTS:

You can then resave the patch in the files menu:

Use the function 'save as...', rename the instrument, and choose the option 'patch only'

Please save your instruments in the original folder.

## SAMPLES

The samples of EASY GUIROS are organised in several folders and sub-folders.

Many microphones were used for the recordings.

The main instrument EASY GUIRO was recorded using a stereo pair of DPA 4006a in a close AB array.

Other microphone used: Neumann U47 FET, Royer R121, Shure 'Green Bullet', AKG C480b with an Omni capsule, Rodes NT4 Stereo.



If you like to use single samples and one-shots during productions, I highly recommend that you take a few minutes and go through all samples: then you can copy/paste (please **do not move samples**) your favourite samples into a new folder you create. This way, you will have a small collection of ready to use 'best-of' Guiro sounds that you can quickly audition while in the middle of a production, without having to go through all folders and subfolders of the library :)

## UPDATES

The included patches are early versions of the software. They were thoroughly checked and tested before release. If you still find bugs or inconsistent behaviour, please report to [office@julientauban.com](mailto:office@julientauban.com)

Also, don't hesitate to send me ideas or requests for future updates. You will be informed via email (from [office@julientauban.com](mailto:office@julientauban.com)) about future updates and add-ons.

## CREDITS

Recordings, mixing, programming and graphics by Julien Tauban.

Recorded 4Tune Studio, Vienna, AUSTRIA

If you find a problem using the sample library, have questions or just want to get in touch, don't hesitate to send an email to [office@julientauban.com](mailto:office@julientauban.com)

Thanks a lot for reading, I wish you lots of inspiration and fun with EASY GUIRO!

Best regards,

Julien Tauban

[www.loopsdelacreme.com](http://www.loopsdelacreme.com)

[www.julientauban.com](http://www.julientauban.com)

**All copyrights@ Loops de la Crème, Julien Tauban, 2019**

